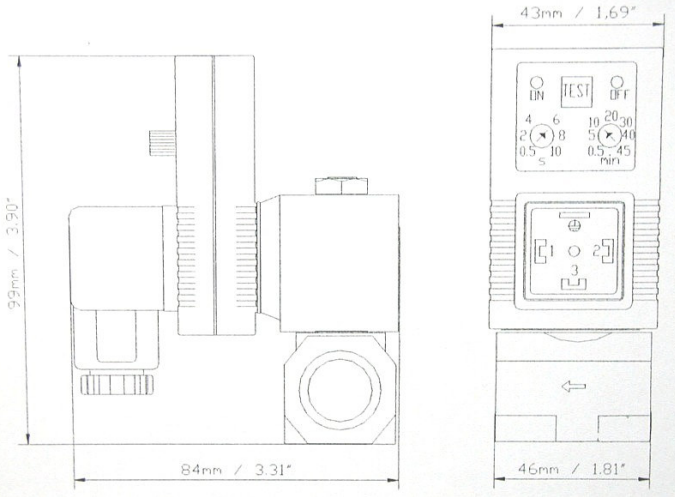


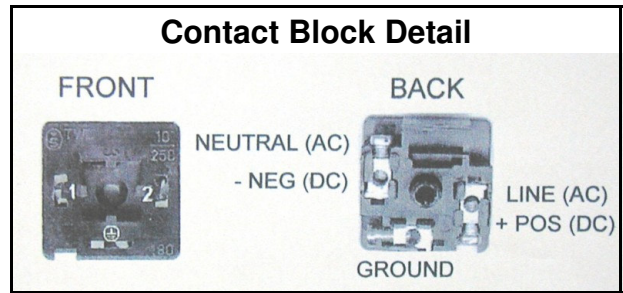
# Timed Autodrain with Ball Valve/Strainer - 21999-0177



## IMPORTANT

When installing the electronic drain valve make sure the power is turned OFF and the air system is drained (zero pressure)

### Contact Block Detail



### INSTALLATION

- Verify flow direction, as stamped on valve body
- Valve can be mounted in any position
- Install a condensate drain on the outlet side of drain valve for proper collection and drainage of condensate
- If tubing is used for draining, beware of “whipping” when valve is open
- Remove contact block from connector and attach wires as shown in Contact Block Detail

### TIMER SPECIFICATIONS

Interval time(T2):	.5 to 45 minutes
Discharge time(T1):	.5 to 10 seconds
Supply voltage	24v-240v 50/60Hz (+/-10%)
Current consumption:	4mA Max.
Operating temperature:	-10°C to +50°C
Environmental protection:	NEMA 4
Case Material:	ABS plastic FR grade
Connection:	DIN 43650A ISO 4400/6952

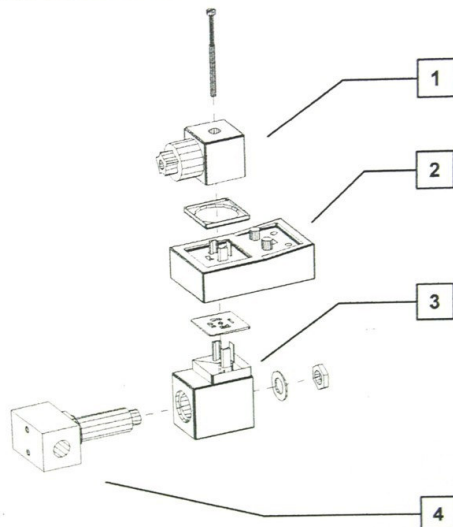
### VALVE SPECIFICATIONS

Type:	2-way direct acting valve
In-Out ports:	1/4", 3/8", 1/2" NPT female
Max. working pressure:	230 PSI
Operating temperature:	2°C to 55°C ambient
Media temperature:	90°C Max.
Valve body:	forged brass
Orifice:	.157"
Insulation:	thermal group F
Environmental protection:	IP65/NEMA 4
Supply voltage:	115v to 240v (see coil)
Voltage tolerance:	+/- 10%
Mounting:	Any position

### MAINTENANCE

### REPLACEMENT PARTS

### TIMER SETTING



- 1 Connector: C18209N2
- 2 Timer: 8201 (24v—240v)
- 3 Coil:  
Standard 115v AC  
230v AC 42000
- 4 Valve: 1/4" 423563  
3/8" 423561  
1/2" 423562

Set INTERVAL time (T1) using right adjusting knob.  
Set DISCHARGE time (T2) using left adjusting knob

Set T1 to 2 seconds and T2 to 20 minutes. (adjust as necessary)

The electronic drain valve is maintenance free. However, we recommend replacing wearing parts every two years. It is also recommended that the drain be tested every time the compressed air system is checked. This can be done by pressing the TEST membrane button on the timer face.